

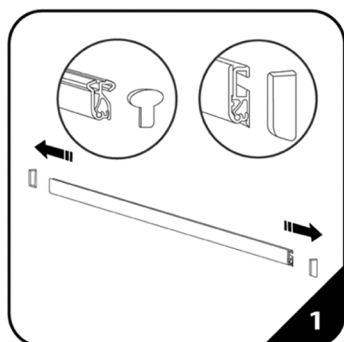
Roll Up Banner Stand - Graphic Replace / Installation

Easy Set Up Instruction

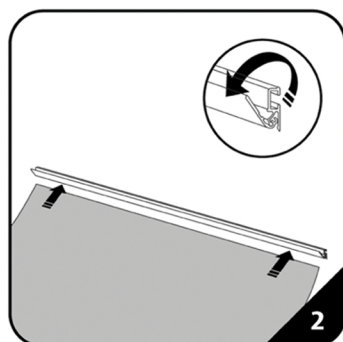
(Please read before set up)



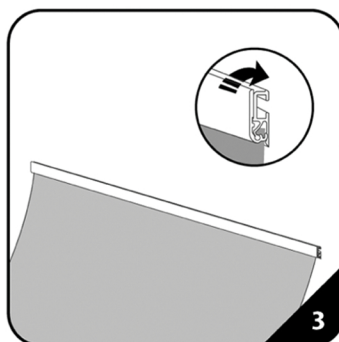
<http://www.prints-mart.com>



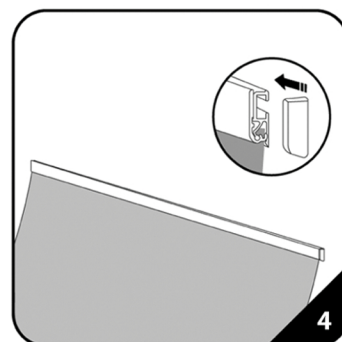
1. Remove the plastic end caps from the upper beam.



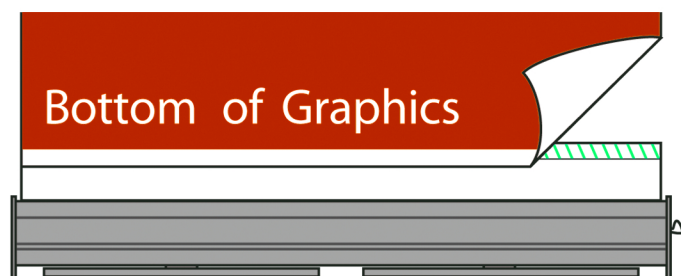
2. Pull apart gently the beam's locking lip in order to attach the top edge of the banner. Ensure the front of the banner faces forward as the same side as the front of the lip.



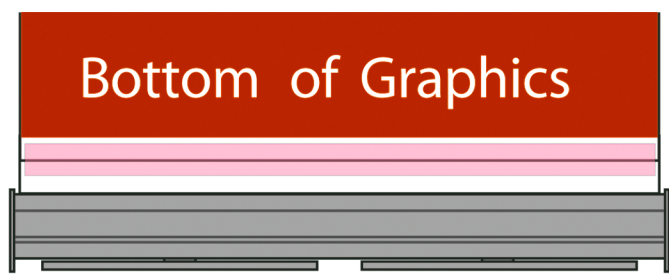
3. Slide the top of the graphic under the lip (it should allow for approx. 3/8" or 1 cm insertion) and close the lip to secure the graphic.



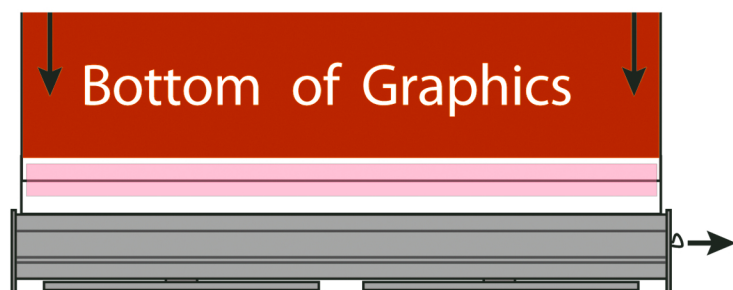
4. Then finish the top by re-attaching the plastic end caps.



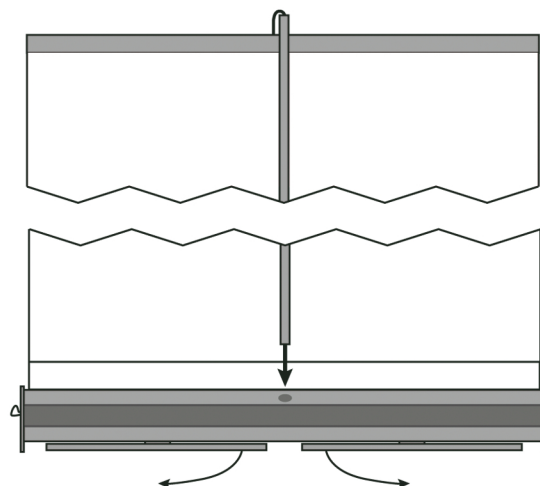
5. Lay the banner flat with the graphic facing up. Remove the backing of the adhesive strip on the banner leader (the piece that is ticking out of the base) and attach it to the back of the banner, ensure it is attached straight.



6. It is recommended that you use some packing tape to re-enforce the bond between the banner and the banner leader since it will be bearing the most stress. Tape across the base of the banner.



7. Now hold the banner firmly with one hand and remove the pin on the side of the base with the other. DO NOT remove the pin if the banner is not attached. It will make the product un-usable if you do so! Be aware that the banner will retract quickly if not held onto. Use both hands to guide the banner into the base evenly.



8. Join the supporting pole (3 sections) together. Insert the pole into the hole in the back of the base. Pull out the banner and hook the aluminum top banner piece onto the top of the pole. Swing out the feet of the base and stand the banner upright. Ready to go!

