

Premium Roll-Up Banner Stand

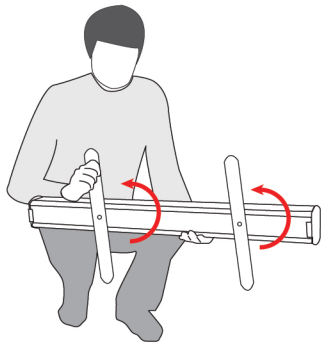
Easy Set Up Instruction

(Please read before set up)

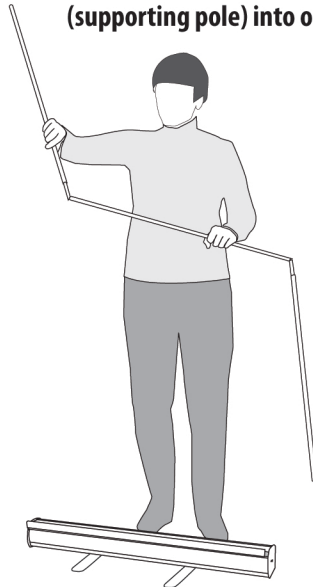


<http://www.prints-mart.com>

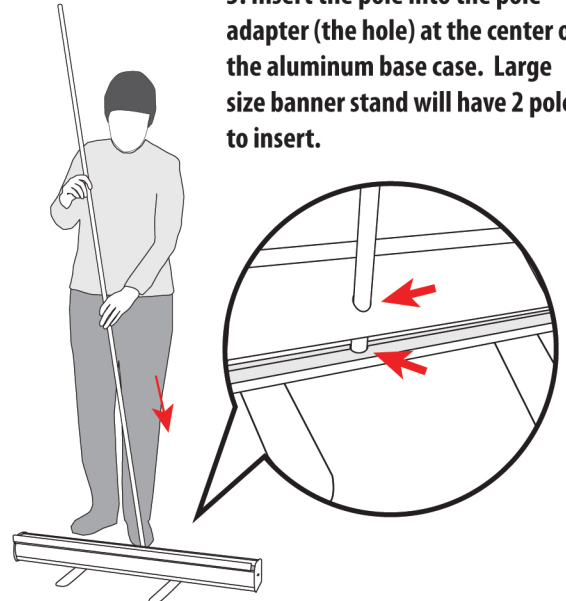
1. Rotate the stabilizing foot to 90 degrees.



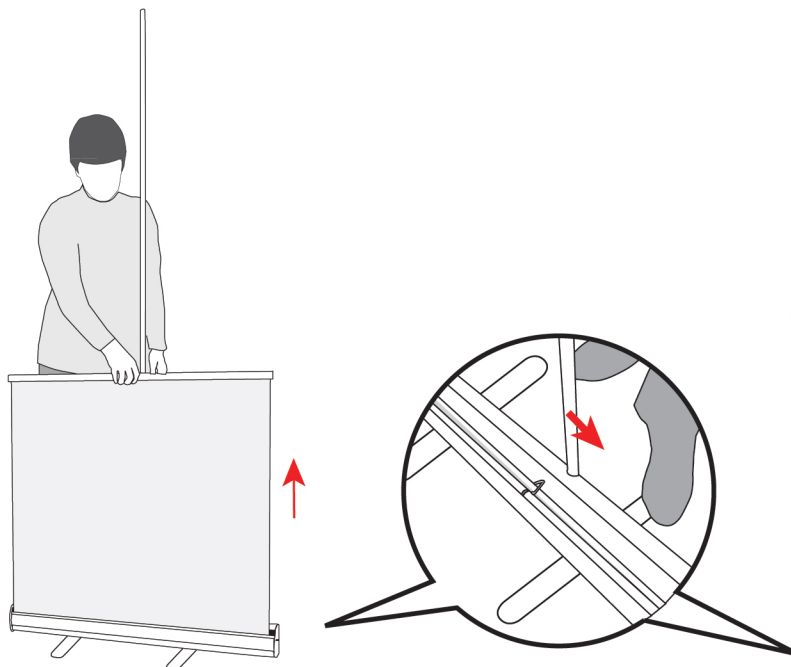
2. Assemble the three fold-pole (supporting pole) into one unit.



3. Insert the pole into the pole adapter (the hole) at the center of the aluminum base case. Large size banner stand will have 2 poles to insert.



4. Stand on the foot of the base support in back to stabilize. Raise the top profile out of the base case slowly and slightly.



5. Continue to raise the graphics slowly and slightly until it reach the top part of the pole. The plastic holder at the top of the ple slips into a slot in the top rail. An arrow indicates the spot where the pole should be inserted.

